



SODIMAX
LOGISTIC SERVICES



EXPERIENCE

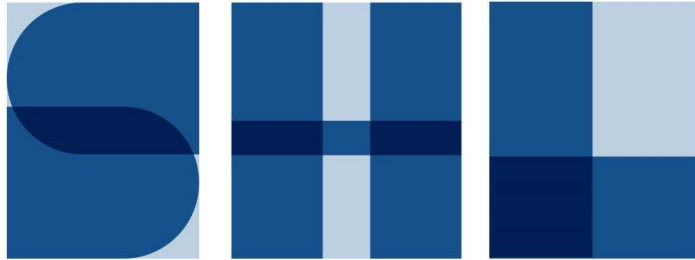


THE Key Word that links the History of SHL and SODIMAX .

- Are the **Years of Work** on the field.
- It is the deep **Knowledge** that has created a solid network in the world.
- It is the **Competence** that young talents acquire, thanks to guidance and training, working in our company.
- It is the basis of our **Relationship** with our customers.
- It is the **Security** of the Services we offer.



HISTORY



SOLUTION FOR HEAVY LOADS

The History of SHL has strong and deep roots in this sector, which has seen the Fagioli family protagonist for over half a century, until today.



Over the time, only the great and concrete passion for this job has remained the same as at the beginning, bringing with it the knowledge and experience gained over the years, while technology, ideas and projects have continually innovated.

With these important and recognized bases, a dynamic, highly qualified, tech company was born, with an experienced, flexible and extremely competent staff, led by Carlo Fagioli.



STORIA



SODIMAX
LOGISTIC SERVICES

Sodimax is a young company founded in 2005 , although it's foundations are solid , based on the twenty-year experience of it's CEO , Massimo Dal Pozzo , in transport and logistics to Africa



A career as General Manager for West Africa in one of the most important shipping companies leads him to have a concrete and capillary knowledge of African territories and culture, also establishing a concrete and reliable network of contacts.

This competence has allowed today a development that goes beyond the African continent and develops all over the world.

VALUES

KNOWLEDGE OF THE TERRITORY

INNOVATION Passion

Quality **COMPETENCE**

Credibility **SECURITY**

Human Relationship



SECURITY

Is our knowledge of the Africa territory and culture , complex and at the same time strategic , combined with the solid network of trusted contacts that comes from it .



- It is **Innovation**, technological and human, embodied in a young and trained staff.
- It is the **Care** of interpersonal relationships, in the company, with branches, with partners and with our target.
- It is the **Credibility** always protected and conquered over the time, the result of constant work.
- It is the **Quality** of our services, designed and managed in a custom way.
- It is our strong **Passion**, which allows us to ensure to those who choose us the total reliability of a tailor-made project, clear and concrete from the beginning till the end.



SERVICES



OUR EXPERIENCE AT YOUR SIDE.

The goal of all our services is to **protect** the product and the customer company: **we build a path**, carefully choosing the right suppliers and partners, and **follow the product** until its arrival.



SERVICES



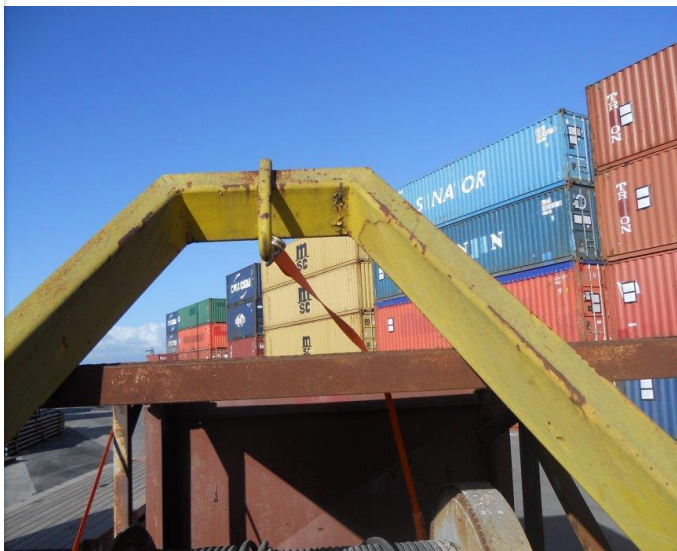
GENERAL FREIGHT FORWARDING

Thanks to Sodimax's recognised **competence** and **deep-rooted** expertise in this sector, we guarantee the **safe shipping and transport** of products in **West Africa** and **worldwide**.

The **dedicated staff**, both local and in all our offices around the world, guarantees an **assistance** of absolute **excellence** and **reliability**.



CASE HISTORY



SERVICES



PROJECT FREIGHT FORWARDING

SHL is a leader in Project Freight Forwarding, just because it has been working in this field **for years** starting from **study, Planning of Transport**, passing through customs clearance (both for import and export) up to the delivery and transport at destination.

All in a completely **safe, serious** and **concrete** way.



CASE HISTORY



TURNKEY SOLUTIONS

- Decennial competences acquired in the fields of transports and international freight forwarding
- Highly qualified Staff
- Great expertise in specialist advice
- Strong network of reliable and loyal partners and suppliers worldwide



These resources allow us to offer a service that ensures problem solution for all kind of problems that may arise , including engineering ones.



We intervene in every phase of the Project and General Forwarding as organizers of the entire service chain and vertically in every single phase.



Studying & planning activity of the transport

Study and planning of the transport for the customers, selecting the operators that will take part of the several successive phases .



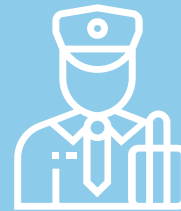
Taking Charge of Transport from the place of origin to the port of Loading

Taking charge of the goods at the port of loading.



Transport from the Airport of departure to the Airport of destination

Connecting phase from the boarding airport to the destination airport.



Custom Clearance

For both import and export phases of the cargo.



Take-over and Transport at Destination

Take-over of goods to be transported from the port of destination.





The union of two leading companies in their sector such as SHL and SODIMAX allows us to develop our services according to a chain able to manage transport in every aspect, always in highly competent way.



BY AIR

- Normal Cargo
- Charter of Project Cargo

BY LAND

- Trasporti normali
- Trasporti eccezionali
- Container

BY SEA

- Container, Roro cargo e Project cargo
- Heavy Lifting

CUSTOM CLEARANCE SERVICES

Control and choice of customs, thanks to the support of companies linked to our group.

- Import
- Export

TARGET

We address and offer our tools to a precise target, corresponding to a single feature: that of wanting a **Service of Quality, Transparency and Competence** that ensures safety throughout the whole transport.

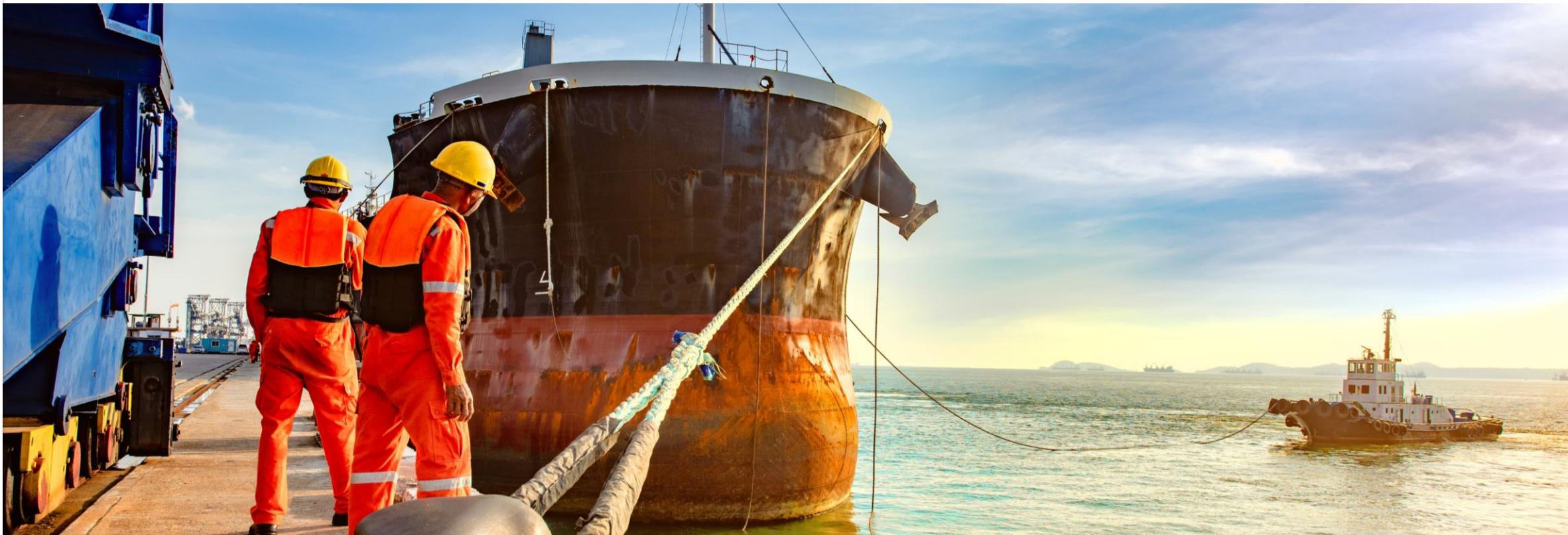


MAKE A DIFFERENCE

This is the «Fil Rouge» that binds us to our Customers.

Is our project, built on **concrete foundations** and carried out in a **competent way**, which makes the difference and allows them to **distinguish** themselves.

Choosing us **guarantees** companies to get **safety** and **quality**, the highest values in a business.





SODIMAX
LOGISTIC SERVICES

SODIMAX S.R.L

Corso Andrea Podesta, 1 - 16128 Genova

www.sodimax.it

CEO

Massimo Dal Pozzo m.dalpozzo@sodimax.it

Tel. 335 328254

GENERAL FREIGHT FORWARDING

Generale info@sodimax.it

COMMERCIALE

Davide Brumana d.brumana@sodimax.it

Tel. 345 1425715

RESPONSABILE OPERATIVO

Daniele Vezzoso d.vezzoso@sodimax.it

Tel. 346 6227531

PRESIDENTE

Carlo Fagioli c.fagioli@sodimax.it

Tel. 335 8245288

PROJECT FREIGHT FORWARDING

Generale info.shl@sodimax.it

COMMERCIALE

Alessandro Raffo raffo.shl@sodimax.it

Tel. 334 1182546

RESPONSABILE OPERATIVO

Matteo Cavalieri cavalieri.shl@sodimax.it

Tel. 388 3248699



**THANK YOU
FOR YOUR
ATTENTION**

